

U[⚡]power



Atlantis

 **LINE
INTERACTIVE**



600
VA

ONEPOWER S80

Line-Interactive UPS

600 VA

ONEPOWER S80

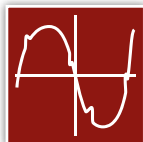
Line-Interactive UPS



La linea di prodotti OnePower è in grado di proteggere qualsiasi sistema elettrico o elettronico nel caso in cui si verifichi una variazione della tensione di alimentazione. Le principali caratteristiche di questa linea di UPS sono:

- Microprocessore integrato
- Stabilizzazione del voltaggio in entrata grazie alla funzionalità AVR
- Tempo di intervento minore di 4ms
- Protezione contro il corto circuito ed il sovraccarico
- Interfaccia USB per la comunicazione col Personal Computer
- Ampio Display LCD con tutti i parametri di funzionamento
- Batteria facilmente sostituibile

La facile installazione e l'uso intuitivo rendono tali prodotti adatti a qualsiasi utenza. Il microprocessore integrato permette all'UPS (il software è incluso) di comunicare, grazie all'interfaccia USB, con il personal computer, permettendo così di monitorarne, in ogni momento, lo stato di funzionamento e di programmarne la chiusura ed il salvataggio dei dati.

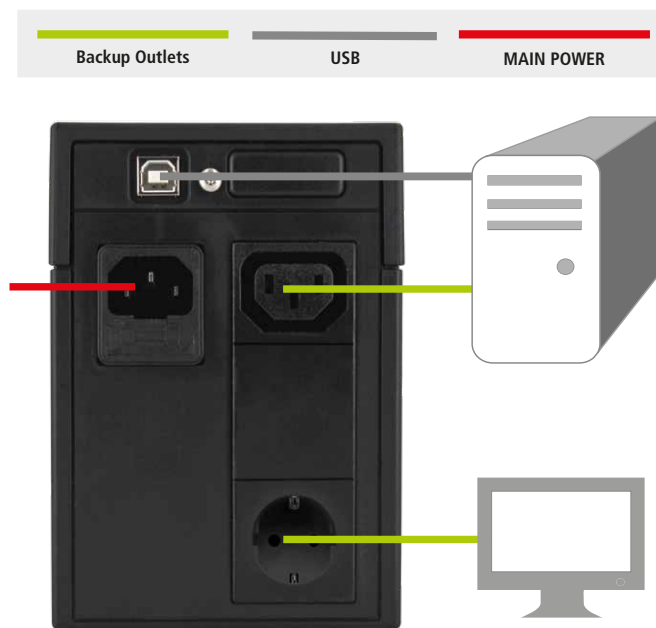


TECHNICAL SPECIFICATIONS

POWER RATING(VA)	600
POWER RATING(W)	300
INPUT	<ul style="list-style-type: none"> • Voltage: 160-290V • Frequency: 50Hz±5%
OUTPUT	<ul style="list-style-type: none"> • Voltage: 190-245 [AC/AVR] / 220V(±7%) [Battery] • Frequency: 50Hz (±1%) • AVR: Built-in • Waveform: Simulated SineWave
TRANSFER	Less than 4 ms (typical)
Line/Battery	Total Efficiency Over 80%
EFFICIENCY	- Voltage: 12VDC
BATTERY	<ul style="list-style-type: none"> - Capacity: 12V/5Ah - Quantity: 1 - Recharge Time: 6-8 hours to (90%) - Type: Sealed Maintenance Free Lead Acid VRLA Type
INDICATORS	LCD: Utility Normal, Backup, Battery Load, Battery Voltage, Input Voltage, Output Voltage, Load, AVR and Battery/Fault conditions
PROTECTION	<ul style="list-style-type: none"> - Overload AC Buzzer continuously alarms - Overload Inverter Buzzer continuously alarms - Short Circuit INV Input Fuse & Electric Circuit - Short Circuit AC Electric Circuit - Battery Over-drain Two stages: Controlled Battery Low Warning & Cut Off - Spike Suppression Meets EN61000-4-5 - Noise Suppression Meets EN50991-1
CONNECTIONS	Output 1xIEC + 1 Schuko (Battery Power Supplied) Computer USB
BACKUP TIME	5 to 10 mins for typical PC Load
DIMENSIONS (WxHxD)	100 x 140 x 292 mm
NET WEIGHT	3,8 Kg (with Battery)
ENVIRONMENTS	<ul style="list-style-type: none"> • Temperature 0°-40° C • Humidity 0-95% (non-condensing)
CERTIFICATION	CE

PUNTI DI FORZA

- Microprocessor Based Design a tecnologia Line-Interactive con forma d'onda pseudo-sinusoidale
- Lo stabilizzatore di tensione multistadio integrato (AVR) garantisce un'alimentazione adeguata
- Tempo di intervento minore di 4ms
- Batteria (12V@5A/h) per una lunga durata in assenza di rete elettrica
- Gestione avanzata delle Batterie ed estrema semplicità nella sostituzione
- Protezione sul Sovraccarico e corto circuito
- Interfaccia USB
- Display LCD
- Il Software di management incluso permette di controllare IL funzionamento dell'UPS



Backup Time (minute)	12'	7'	5'	3'	1'40"
Power Rating (W)	100	150	200	250	300
Power Rating (VA)	200	300	400	500	600

UPS
Codice: A03-S80
EAN: 8026974021355



Atlantis
www.atlantis-land.com

600
VA

ONEPOWER S80

Line-Interactive UPS



The OnePower UPS is able to protect every electric or electronic system in which could be a fast change of the supply-voltage. The main features of these UPS are:

- Transfer time (<4ms)
- Microprocessor based
- Stabilization of the input voltage with AVR
- Overload protection, Short Circuit protection
- USB Interface
- LDC Display
- Easy Swappable Battery

Atlantis Line Interactive UPS is easy to install and use. The integrated Microprocessor besides allows and ensures intelligent automatic shutdown (software is included).

300
WATT

CPU

AVR

LCD

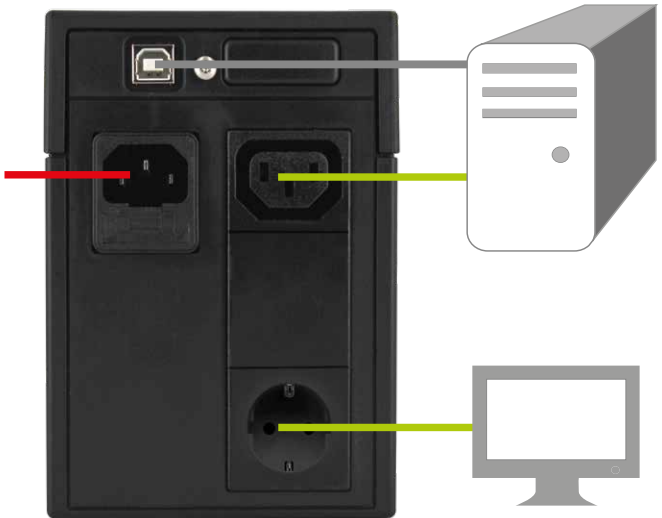
BATTERY
12V@5A/h

TECHNICAL SPECIFICATIONS

POWER RATING(VA)	600
POWER RATING(W)	300
INPUT	<ul style="list-style-type: none"> • Voltage: 160-290V • Frequency: 50Hz±5%
OUTPUT	<ul style="list-style-type: none"> • Voltage: 190-245 [AC/AVR] / 220V(±7%) [Battery] • Frequency: 50Hz (±1%) • AVR: Built-in • Waveform: Simulated SineWave
TRANSFER	Less than 4 ms (typical)
Line/Battery	Total Efficiency Over 80%
EFFICIENCY	- Voltage: 12VDC
BATTERY	<ul style="list-style-type: none"> - Capacity: 12V/5Ah - Quantity: 1 - Recharge Time: 6-8 hours to (90%) - Type: Sealed Maintenance Free Lead Acid VRLA Type
INDICATORS	LCD: Utility Normal, Backup, Battery Load, Battery Voltage, Input Voltage, Output Voltage, Load, AVR and Battery/Fault conditions
PROTECTION	<ul style="list-style-type: none"> - Overload AC Buzzer continuously alarms - Overload Inverter Buzzer continuously alarms - Short Circuit INV Input Fuse & Electric Circuit - Short Circuit AC Electric Circuit - Battery Over-drain Two stages: Controlled Battery Low Warning & Cut Off - Spike Suppression Meets ENG1000-4-5 - Noise Suppression Meets EN50991-1
CONNECTIONS	Output 1xIEC + 1 Schuko (Battery Power Supplied) Computer USB
BACKUP TIME	5 to 10 mins for typical PC Load
DIMENSIONS (WxHxD)	100 x 140 x 292 mm
NET WEIGHT	3,8 Kg (with Battery)
ENVIRONMENTS	<ul style="list-style-type: none"> • Temperature 0°-40° C • Humidity 0-95% (non-condensing)
CERTIFICATION	CE

PLUS

- Microprocessor Based Design Line Interactive Simulated SineWave Topology
- Wide input range application without using battery power (AVR)
- Transfer time <4ms
- Long time backup (battery 12V@5 A/h)
- Advanced Battery Management & Easy Swappable Battery Function
- Overload and Short Circuit Protection
- LCD Display
- USB Communication Interface
- Management Software is included



Backup Time (minute)	12'	7'	5'	3'	1'40"
Power Rating (W)	100	150	200	250	300
Power Rating (VA)	200	300	400	500	600

UPS
Codice: A03-S80
EAN: 8026974021355